

# G115 Cast Iron Residential Oil Boiler

# Buderus



## Often Imitated. Never Duplicated.

- High Efficiency - AFUE's Above 86%
- Flexible, Corrosion Resistant GL-180M Cast Iron
- Full Swing Burner Door for Excellent Serviceability
- Chimney and Direct Vent Options
- 74,000 to 120,000 BTU/Hr Output

**Comfortable. Efficient. Intelligent Heating.**

ESTABLISHED 1731

**275**  
YEARS

**Buderus**

## A better way to heat your home.

The Buderus G115 boiler is designed and built to the highest industry standards. It extracts and delivers more heat from every fuel dollar. Acknowledged as the leader in high-efficiency, low emission hydronic heating, Buderus offers innovative design, quality manufacturing, exceptional efficiency and performance.

A G115 cast iron oil boiler is ideal for new installations or as a replacement for virtually any make or model of boiler. They are compatible with most hot water tanks. Constructed with superior materials and designed by the industry's leading engineers, the G115 boiler has set the standard for the industry. With two ETL approved venting options either into a chimney or directly through the wall, the G115 allows a wide range of installation possibilities.



### Comfortable

Keeping your home comfortable and warm is a high priority—but it doesn't have to come at a high cost. Whether you heat by baseboard, panel radiators, hydro-air systems or radiant flooring, our advanced heating systems will provide many years of exceptional comfort and economy. Unlike a conventional boiler which heats and circulates water at only one temperature — typically 170° to 180° F and keeps heating and circulating this high temperature water until the thermostat signals it to stop. A Buderus boiler, especially when paired with the Logamatic control, eliminates these room temperature swings by adjusting the boiler water temperature to the current conditions, saving fuel while keeping you warm and comfortable.

### Efficient

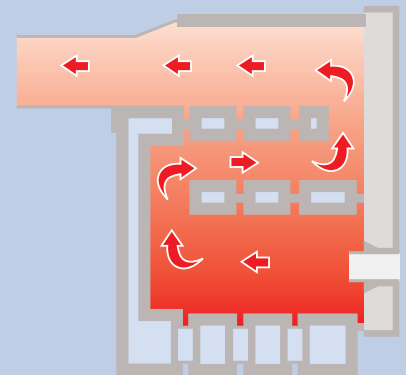
Energy star ratings for boilers are based on an Annual Fuel Utilization Efficiency (AFUE) rating, which is a ratio of the heat produced to the energy consumed on an annual basis. Not only is the Buderus G115 boiler Energy Star rated, but it is also designed for ease of installation and maintenance. With features like a compact dimension and integrated handles for ease of transporting, adjustable leveling legs, rear tappings and flue connection, baffles and clips for adjusting stack temperatures and a heavy gauge blue enameled jacket, a Buderus boiler is not only efficient, but it is easy to install.

With a full “swing” burner door, which can be hinged on either the left or the right, and front access plugs which permit flushing of the boiler's interior, the G115 can be thoroughly and properly cleaned in a fraction of the time it takes to clean a conventional boiler.

## The modified three-pass boiler:

### The G115 modified three-pass boiler is designed for:

- Optimized combustion with positive pressure-fired boilers and tailored chamber geometry — no need for a heat-consuming refractory or target wall eliminating the need for costly repairs.
- Minimal stack losses with the modified three-pass flue design's large heat transfer areas.
- Low standby losses with a full 3" jacket of thermal insulation around the entire block — even underneath the boiler!



### How it works.

The flame fires into the first chamber. Then the flue products flow through the second pass to the front of the boiler. From there they reverse direction again — moving through the third pass to the back, and finally exiting via the flue connection into the chimney. Because the gases are held in the boiler longer this allows the cast iron to absorb the maximum amount of heat, resulting in a lower stack temperature and a higher efficiency.

## Intelligent Heating – By Design

The G115 is designed in Europe where fuel costs are significantly higher and environmental regulations are more stringent. Using state of the art techniques in the design and manufacturing process, the G115 is built to maximize the heating value of every ounce of fuel and constructed with the highest quality materials.

Manufactured without a heat-consuming refractory or target wall, service and maintenance calls are minimized, while fuel efficiency and heat transfer is maximized. The patented Buderus GL-180M flexible cast iron ensures that the boiler resists thermal shock under conditions of rapid temperature change. Sections are securely joined together and sealed by profiled, beveled steel push nipples, ensuring a long life with no leakage. Special compounds provide a gas-tight seal for safe and efficient operation. The full 3" thermal insulation around the boiler, including underneath, increases efficiency by almost eliminating standby and stack temperature losses.

Buderus, the world leader in heating technology, manufactures the highest quality boilers based on centuries of experience. With its innovative design and quality manufacturing, a Buderus boiler will outlast and out-perform virtually any other residential hot-water system in the world.

### Domestic Hot Water Tanks



Need domestic hot water? Then combine your Buderus boiler with a Buderus indirect hot water tank. A Buderus tank is so well insulated that it loses less than 1/4° per hour. Available in a vertical, or a horizontal space saving model that

installs under the boiler, these tanks have a higher recovery rate than stand alone or tankless coil models. While a Buderus boiler works great with any hot water tank – you can be sure of increased boiler efficiency, system longevity and minimized service calls when you insist on a Buderus tank and boiler.

### Convenient Logamatic Control



Adding a Buderus Logamatic control will give you the ultimate in comfort and fuel savings. Microprocessor-based controls allow the Logamatic to intelligently manage both your home heating and domestic hot water. The Logamatic has 16 standard functions including day/night setback, automatic summer/winter changeover and even a vacation mode. Set it once and relax in the comfort of your warm home.

## Complete your system for added comfort to your home!

Once you have a Buderus boiler you can add a Buderus indirect fired hot water tank, an optional Buderus Logamatic control or both. The Logamatic control maximizes your comfort and fuel savings, it will also accommodate specialized heating applications such as radiant flooring. Combined, this premium heating system will provide years of exceptional comfort and economy . . . for little more than cost of a standard replacement components.

Manufactured with the patented Buderus GL-180M flexible cast iron, the sections are tightly joined together and sealed by profiled, beveled steel push nipples, ensuring a long life with no leakage.



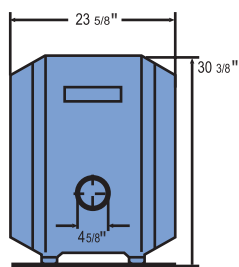
Special compounds provide a gas-tight seal for safe and efficient operation. And, thanks to the GL-180M cast iron's amazing flexibility, this boiler resists thermal shock under conditions of rapid temperature change.



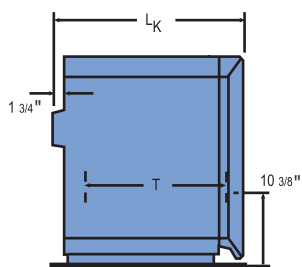
The G115 shown with horizontal tank and Logamatic control.

G115 and LT tanks can be used in any combination except for the G115/34 and the LT160.

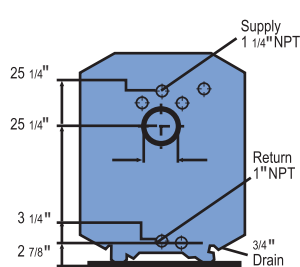
# G115 Cast Iron Residential Oil Boiler



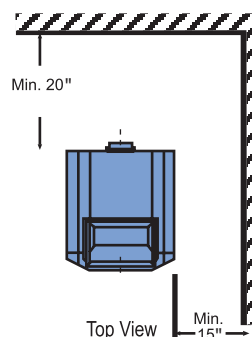
Front View



Side View



Rear View



Top View

Model	G115/21	G115/28	G115/34
<b>Performance Data</b>			
Gross Output MBH	74	98	120
# of Sections	3	4	5
Net IBR MBH	64	85	104
Firing Rate (GBH)	.60-.75†	.80	1.0
AFUE	86.5 %	86.8%	86%
<b>Piping Connections</b>			
Vent Connection Size	5"	5"	5"
Supply	1 1/4"	1 1/4"	1 1/4"
Return	1"	1"	1"
<b>Physical Dimensions</b>			
Overall Boiler Length (L)	26 1/4"	31"	35 3/4"
Boiler Block Length (L_K)	21 1/4"	25 3/4"	30 1/2"
Minimum Boiler Width	18"	18"	18"
Boiler Width	23 1/2"	23 1/2"	23 1/2"
Minimum Boiler Height	33 1/2"	33 1/2"	33 1/2"
Height	34 1/2"	34 1/2"	34 1/2"
Boiler Feet Spacing	13 1/4"	18"	22 1/2"
Fire Box Depth (T)	16"	20 1/2"	25"
Fire Box Volume cu. ft.	1.20	1.75	2.21
Dry Weight (lbs)	330	403	476
Water Content (gal)	8.7	10.8	12.9
<b>Recommended Clearances for Ease of Serviceability</b>			
Side	15"	15"	15"
Rear	20"	20"	20"

All G115  
KP Kits Include:

- L7248C1006 aquastat
- Flexible oil line
- Circulator
- Flanges

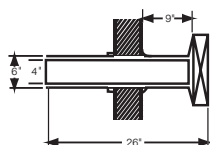


MEA# 358-91-E  
CRN# 1495.9c, 620.T

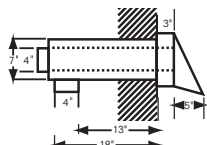
† NOTE: G115/21 Dual Firing Rate capability - from .60-.75 - is only available with Carlin EZ1 burner or Riello F3 burner. The higher the Firing Rate will result in a D.O.E. heating capacity of 90,000 BTU/Hr. and the Net IBR Rating of 77,000 BTU/Hr.

## Clearance Requirements

Front	Side	Rear	Top	Galvanized Vent Pipe	Flex Insulated Oil Vent	AT-4 Exhaust Only Termination	FT-4 Concentric Termination
24"	6"	18"	6"	18"	1"	1"	1"



AT-4 Aerocowl Termination



FT-4 Concentric Pipe-in-Pipe Termination

One of the two ETL certified terminations are required for use with G115 series boilers for direct vent applications. Both terminations are "zero clearance" systems for easy and versatile applications.

## G115 direct vent installation tips

ETL approved with two 4" 90° elbows, and up to 6' of 4" regular smoke pipe for short vent runs. For longer runs, use up to 10' of flexible stainless steel insulated oil vent.

Use 4" metal pipe for air intake. Use at least 6' to 8' of 4" metal pipe for air intake in conditioned space in cold climates (below -20°F)

Direct vent burners are equipped with pre-and post-purge cycles for safe, complete exhaust of all combustion products, while cooling oil burner nozzle for positive shut-off.

Buderus recommends the use of Becket, Carlin and Riello. Please refer to the Buderus trade price list for models.

# Buderus

BBT North America Corporation  
50 Wentworth Avenue  
Londonderry, NH 03053  
Tel: (603) 552-1100  
Fax: (603) 584-1681

Subject to change without notice  
© 2006 Buderus  
Part Number 44499015-04/07